

# NANO 2013

## 11<sup>TH</sup> ANNUAL CONFERENCE ON NANOTECH/BIOTECH

April 22, 2013 – Biotech Auditorium

Rensselaer Polytechnic Institute, Troy, New York

### Welcome and Introduction – 10:00am

Jeffrey M. Schanz, PhD  
Assistant Vice President for Alumni Relations; Executive Director of the Rensselaer Alumni Association, Rensselaer (Troy, NY)

### Nanomedicine under the microscope: A global perspective via pictures – 10:10am

Raj Bawa, MS, PhD  
Patent Agent, Bawa Biotech LLC (Ashburn, VA); Adjunct Professor/Adjunct Faculty, Rensselaer (Troy, NY); Scientific Advisor, Teva Pharma, Ltd. (Israel); Co-chair, Nanotech Subcommittee, ABA (Chicago, IL)

### Keynote: 10:30am – 11:00am

*Multilayered personalized medicine and European nanomedicine towards Horizon 2020*

Adriale Prina-Mello, MSc, PhD

CRANN Investigator, Centre for Research on Adaptive Nanostructures & Nanodevices; Senior Research Fellow, School of Medicine, Trinity College; Executive Board Member, European Technology Platform on Nanomedicine (Dublin, Ireland)

### Session I: 11:00am – 12:15pm

Moderator: Raj Bawa, MS, PhD, Patent Agent, Bawa Biotech LLC (Ashburn, VA); Adjunct Professor/Adjunct Faculty, Rensselaer (Troy, NY); Scientific Advisor, Teva Pharma, Ltd. (Israel); Co-chair, Nanotech Subcommittee, ABA (Chicago, IL)

#### *Neuroprotective nanoparticles in glaucoma treatment*

Marianna Foldvari, PhD, DPharmSci

Canada Research Chair in Bionanotechnology and Nanomedicine; Professor of Pharmaceutical Sciences, University of Waterloo (Canada)

#### *Nanomaterials for the modulation of the CNS immune system*

Rutledge Ellis-Behnke, PhD

Director, Nanomedicine Translational Think Tank, University of Heidelberg (Germany); Research Affiliate, MIT (Cambridge, MA); Affiliate Professor, University of South Florida (Tampa, FL)

#### *Nanotechnology applications in stem cell research and therapy*

Glenn Monastersky, PhD

Director, Rensselaer Center for Stem Cell Research; Director of Operations and Associate Director, Center for Biotechnology and Interdisciplinary Studies; Professor of Practice, Biomedical Engineering, Rensselaer (Troy, NY)

#### *Complement activation: A capricious immune barrier to the clinical use of nanomedicines*

Janos Szebeni, MD, PhD, DSc

Professor, Department of Nanobiotechnology and Regenerative Medicine, Miskolc University (Budapest, Hungary); Director, Nanomedicine Research and Education Center, Semmelweis University/Bay Zoltan Ltd (Budapest, Hungary)

#### *How does the human body handle nanopharmaceuticals?*

Srikumaran Melethil, PhD, JD

Patent Attorney; Professor Emeritus, Schools of Pharmacy and Medicine, University of Missouri (Kansas City, MO); Of Counsel, Fraser Clemens Martin & Miller LLC (Perrysburg, OH); President and CEO, Law and Science Consulting (Springfield, OH)

### Networking Lunch: 12:15pm – 12:45pm

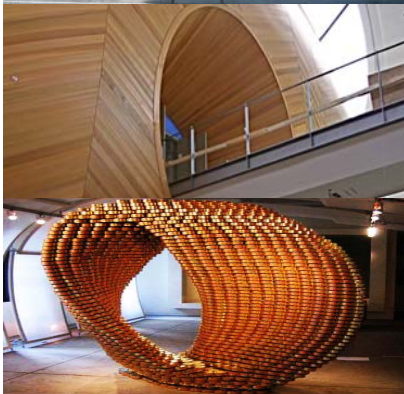
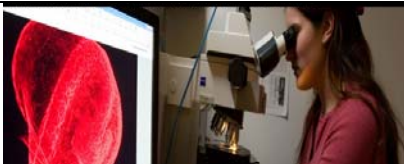
### Young Scholar Award (Ceremony/Talk): 12:45pm – 1:00pm

\$500 award sponsored by Dove Medical Press and presented by Dr. Thomas J. Webster, Editor, International Journal of Nanomedicine, Dove Medical Press (New Zealand); Chair and Professor, Department of Chemical Engineering, Northeastern University (Boston, MA)

*Leveraging Investments, Know-How, and Business Practices from the Nanoelectronics Industry to Propel the Biomedical Industry*

Michelle Pautler, MPH

College of Nanoscale Science and Engineering, SUNY Albany (Albany, NY)



**Session II: 1:00pm – 2:15pm**

**Moderator: Lucy L. Thomson, MS, JD, Chair, American Bar Association (ABA) Section of Science & Technology Law (Chicago, IL); Partner, Livingston PLLC (Washington, D.C.)**

*Science and technology law – Careers for students and technologists*

Eileen S. Ewing, MA, MPhil, JD  
Partner, Kirkpatrick & Lockhart Preston Gates Ellis LLP (Boston, MA); Co-Chair, Life Sciences Division, ABA Section of Science & Technology Law (Chicago, IL)

*Practical intellectual property (IP) issues for academia and industry*

Brian E. Reese, PhD, JD, MBA  
Patent Attorney; Associate, Choate Hall & Stewart LLP (Boston, MA)

*Cost effective strategies for obtaining IP protection in today's global environment*

Susanne M. Hopkins, JD  
Partner, Vorys, Sater, Seymour and Pease LLP (Washington, DC)

*From lab IP to global IP - Getting the most out of what you do in the lab*

Bruce Wu, PhD, JD  
Patent Attorney; Associate, Foley & Lardner (Washington, DC)

*Patents and the US Patent Office – Impact on nanobusiness*

Rupam Bhar, JD  
Patent Attorney; Associate, Sughrue Mion PLLC (Washington, DC)

**Coffee Break and Raffles: 2:15pm – 2:45pm**

**Session III: 2:45pm – 4:15pm**

**Moderator: Glenn Monastersky, MS, PhD, Director, Rensselaer Center for Stem Cell Research; Director of Operations and Associate Center Director, Center for Biotechnology and Interdisciplinary Studies; Professor of Practice, Biomedical Engineering, Rensselaer Polytechnic Institute (Troy, NY)**

*What is nanomedicine?*

Lajos Balogh, PhD  
Editor, Nanomedicine: NBM; Chief Scientific Advisor, AA Nanomedicine and Nanotechnology; Adjunct Professor of Pharmaceutical Sciences, Northeastern University (Boston, MA)

*The top five nano pitfalls we need to avoid*

Thomas J. Webster, MS, PhD  
Editor, International Journal of Nanomedicine; Chair and Professor, Department of Chemical Engineering, Northeastern University (Boston, MA)

*Fibril-mediated protein nanotube oligomerization*

Gerald F. Audette, PhD  
Associate Professor of Chemistry, York University (Canada)

*Antimicrobial activities of novel nano-formulated molecules through oral administration*

Jagat R. Kanwar, MSc, PhD  
Associate Professor of Immunology and Cell Biology, Deakin U (Australia)

*Cleantech - The good, the bad and the ugly - and nano's role in all this*

Jim Hurd  
Director, GreenScience Exchange (San Francisco, CA)

*Nanotoxicity of carbon nanotubes and metallo-oxide nanoparticles: cellular and signaling mechanisms*

Alok Bhushan, MSc, PhD  
Professor, Department of Biomedical and Pharmaceutical Sciences, College of Pharmacy, Division of Health Sciences, Idaho State University, (Pocatello, ID); Mountain States Tumor and Medical Research Institute (Boise, ID)  
and  
James C K Lai, PhD  
Assistant Chair and Professor, Department of Biomedical and Pharmaceutical Sciences, College of Pharmacy, Division of Health Sciences, Idaho State University, (Pocatello, ID); Mountain States Tumor and Medical Research Institute (Boise, ID)

**Networking Reception: Experimental Media & Performing Arts Center 4:30pm – 6:30pm (Light Food + Sushi + Cash Bar)**

**Speaker Dinner: Hilton Garden Inn 7pm**

