

NANO 2013

11TH ANNUAL CONFERENCE ON NANOTECH/BIOTECH

April 22, 2013 – Biotech Auditorium

Rensselaer Polytechnic Institute, Troy, New York

Welcome and Introduction – 10:00am

Jeffrey M. Schanz, PhD
Assistant Vice President for Alumni Relations; Executive Director of the Rensselaer Alumni Association, Rensselaer (Troy, NY)

Nanomedicine under the microscope: A global perspective via pictures – 10:10am

Raj Bawa, MS, PhD
Patent Agent, Bawa Biotech LLC (Ashburn, VA); Adjunct Professor/Adjunct Faculty, Rensselaer (Troy, NY); Scientific Advisor, Teva Pharma, Ltd. (Israel); Co-chair, Nanotech Subcommittee, ABA (Chicago, IL)

Keynote: 10:30am – 11:00am

Multilayered personalized medicine and European nanomedicine towards Horizon 2020

Adriale Prina-Mello, MSc, PhD

CRANN Investigator, Centre for Research on Adaptive Nanostructures & Nanodevices; Senior Research Fellow, School of Medicine, Trinity College; Executive Board Member, European Technology Platform on Nanomedicine (Dublin, Ireland)

Session I: 11:00am – 12:15pm

Moderator: Raj Bawa, MS, PhD, Patent Agent, Bawa Biotech LLC (Ashburn, VA); Adjunct Professor/Adjunct Faculty, Rensselaer (Troy, NY); Scientific Advisor, Teva Pharma, Ltd. (Israel); Co-chair, Nanotech Subcommittee, ABA (Chicago, IL)

Neuroprotective nanoparticles in glaucoma treatment

Marianna Foldvari, PhD, DPharmSci

Canada Research Chair in Bionanotechnology and Nanomedicine; Professor of Pharmaceutical Sciences, University of Waterloo (Canada)

Nanomaterials for the modulation of the CNS immune system

Rutledge Ellis-Behnke, PhD

Director, Nanomedicine Translational Think Tank, University of Heidelberg (Germany); Research Affiliate, MIT (Cambridge, MA); Affiliate Professor, University of South Florida (Tampa, FL)

Nanotechnology applications in stem cell research and therapy

Glenn Monastersky, PhD

Director, Rensselaer Center for Stem Cell Research; Director of Operations and Associate Director, Center for Biotechnology and Interdisciplinary Studies; Professor of Practice, Biomedical Engineering, Rensselaer (Troy, NY)

Complement activation: A capricious immune barrier to the clinical use of nanomedicines

Janos Szebeni, MD, PhD, DSc

Professor, Department of Nanobiotechnology and Regenerative Medicine, Miskolc University (Budapest, Hungary); Director, Nanomedicine Research and Education Center, Semmelweis University/Bay Zoltan Ltd (Budapest, Hungary)

How does the human body handle nanopharmaceuticals?

Srikumaran Melethil, PhD, JD

Patent Attorney; Professor Emeritus, Schools of Pharmacy and Medicine, University of Missouri (Kansas City, MO); Of Counsel, Fraser Clemens Martin & Miller LLC (Perrysburg, OH); President and CEO, Law and Science Consulting (Springfield, OH)

Networking Lunch: 12:15pm – 12:45pm

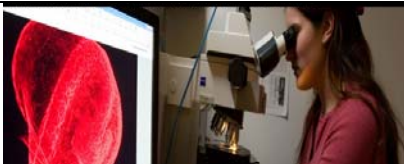
Young Scholar Award (Ceremony/Talk): 12:45pm – 1:00pm

\$500 award sponsored by Dove Medical Press and presented by Dr. Thomas J. Webster, Editor, International Journal of Nanomedicine, Dove Medical Press (New Zealand); Chair and Professor, Department of Chemical Engineering, Northeastern University (Boston, MA)

Leveraging Investments, Know-How, and Business Practices from the Nanoelectronics Industry to Propel the Biomedical Industry

Michelle Pautler, MPH

College of Nanoscale Science and Engineering, SUNY Albany (Albany, NY)



Session II: 1:00pm – 2:15pm

Moderator: Lucy L. Thomson, MS, JD, Chair, American Bar Association (ABA) Section of Science & Technology Law (Chicago, IL); Partner, Livingston PLLC (Washington, D.C.)

Science and technology law – Careers for students and technologists

Eileen S. Ewing, MA, MPhil, JD
Partner, Robinson & Cole LLP (Boston, MA); Co-Chair, Life Sciences Division, ABA Section of Science & Technology Law (Chicago, IL)

Practical intellectual property (IP) issues for academia and industry

Brian E. Reese, PhD, JD, MBA
Patent Attorney; Associate, Choate Hall & Stewart LLP (Boston, MA)

Cost effective strategies for obtaining IP protection in today's global environment

Susanne M. Hopkins, JD, Partner
Ari Zytcer, JD, Associate
Vorys, Sater, Seymour and Pease LLP (Washington, DC)

From lab IP to global IP - Getting the most out of what you do in the lab

Bruce Wu, PhD, JD
Patent Attorney; Associate, Foley & Lardner (Washington, DC)

Patents and the US Patent Office – Impact on nanobusiness

Rupam Bhar, JD
Patent Attorney; Associate, Sughrue Mion PLLC (Washington, DC)

Coffee Break and Raffles: 2:15pm – 2:45pm

Session III: 2:45pm – 4:15pm

Moderator: Glenn Monastersky, MS, PhD, Director, Rensselaer Center for Stem Cell Research; Director of Operations and Associate Center Director, Center for Biotechnology and Interdisciplinary Studies; Professor of Practice, Biomedical Engineering, Rensselaer Polytechnic Institute (Troy, NY)

What is nanomedicine?

Lajos Balogh, PhD
Editor, Nanomedicine: NBM; Chief Scientific Advisor, AA Nanomedicine and Nanotechnology; Adjunct Professor of Pharmaceutical Sciences, Northeastern University (Boston, MA)

The top five nano pitfalls we need to avoid

Thomas J. Webster, MS, PhD
Editor, International Journal of Nanomedicine; Chair and Professor, Department of Chemical Engineering, Northeastern University (Boston, MA)

Fibril-mediated protein nanotube oligomerization

Gerald F. Audette, PhD
Associate Professor, Department of Chemistry, York University (Canada)

Antimicrobial activities of novel nano-formulated molecules through oral administration

Jagat R. Kanwar, MSc, PhD
Associate Professor of Immunology and Cell Biology, Deakin University (Australia)

Cleantech - The good, the bad and the ugly - and nano's role in all this

Jim Hurd
Director, GreenScience Exchange (San Francisco, CA)

Nanotoxicity of carbon nanotubes and metallo-oxide nanoparticles: cellular and signaling mechanisms

Alok Bhushan, MSc, PhD, Professor
James C K Lai, PhD, Assistant Chair and Professor
Department of Biomedical and Pharmaceutical Sciences, College of Pharmacy, Division of Health Sciences, Idaho State University, (Pocatello, ID); Mountain States Tumor and Medical Research Institute (Boise, ID)

Networking Reception: Experimental Media & Performing Arts Center 4:30pm – 6:30pm (Light Food + Sushi + Cash Bar)

Speaker Dinner: Hilton Garden Inn 7pm

